

# LEOCH PU576V80(576V80Ah)

## PU576V80



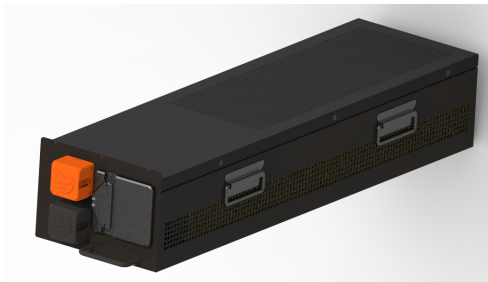
### LEOCH Provides Safe and Efficient LFP Battery Solutions.

LEOCH PU series adopt high safety LFP cell, with intelligent BMS management system independently developed by LEOCH, safe and reliable, excellent performance, stability and reliability, suitable for three-phase UPS backup system.

#### Features

- Integrated design of reserves
- CTP design
- Cabinet occupies less volume
- Built-in gas sensor, early warning, faster intervention
- CAN/RS485 Communication output for monitoring
- Eco-friendly
- Safest lithium battery technology
- Meet UL, IEC and other authoritative international standard certifications

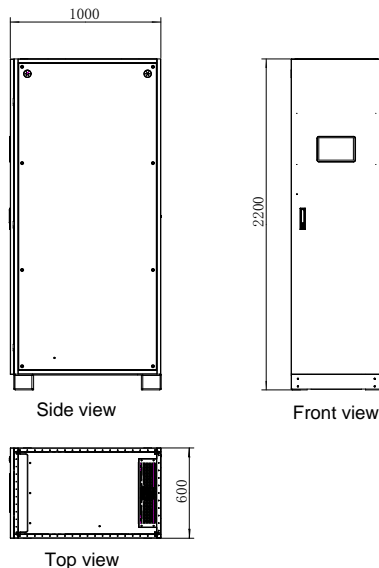
#### PACK Style



#### Performance data

Time(min)	5	10	15	20	30	60
Constant Power(kw)	320.62	288	202.5	152.32	104.4	54

#### Size



#### System specifications

Case Material	SPCC
Cell Type	Prismatic LiFePO <sub>4</sub>
Terminal Type	M8
IP Grade	IP20

#### Basic performance

Nominal Voltage	576V
Nominal Capacity	80Ah
Rated Energy	46.0KWH
Self Discharge	≤3%/Month
Cycle Life	3000 times(1C/1C)
Size(W*D*H)	600*1000*2200
Weight	Approx. 790Kg
Design Life	15 years

#### Charge performance

Rated Charge Current	40A
Maximum Charge Current	80A
Rated Charge Voltage	504-621V

#### Discharge performance

Max Output Power	320.62KW@5min
Standard Discharge Time	288KW@10min
Rated Discharge Cut-off Voltage	504V
Minimum Discharge Cut-off Voltage	477V

#### Temperature and humidity

Discharge Temperature	-15-50°C
Charge Temperature	5-45°C
Storage Temperature	-10-45°C
Transportation Temperature	-10-45°C
Operating Humidity	≤95%R.H
Altitude	≤2000m

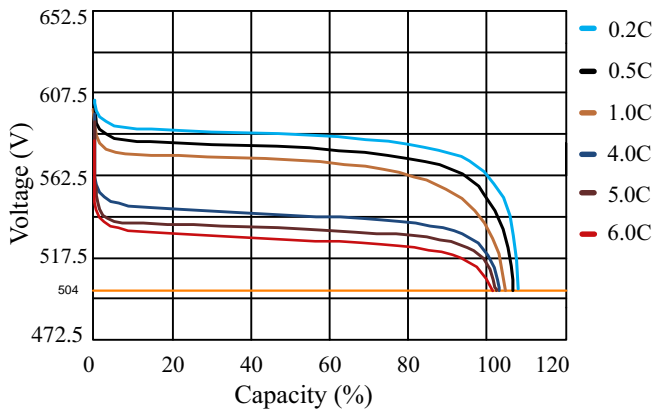
#### Other

Communication	CAN/RS485/TCP/Dry Contact
Dry Contact	DI/DO
System Parallels	≤15
Screen	Required
Thermal Management	Nature Cooling

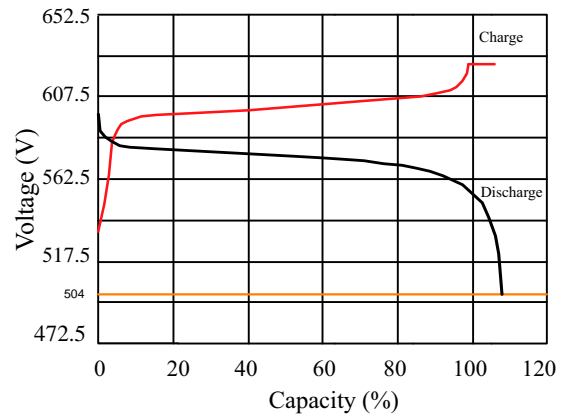
#### Certification

Module: RoHS, REACH, UN38.3, CE-EMC, IEC62619, UL9540A  
Cluster: UL9540A

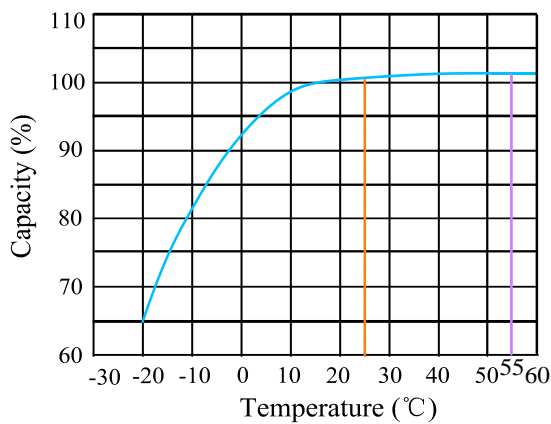
## Discharge Performance at 25°C



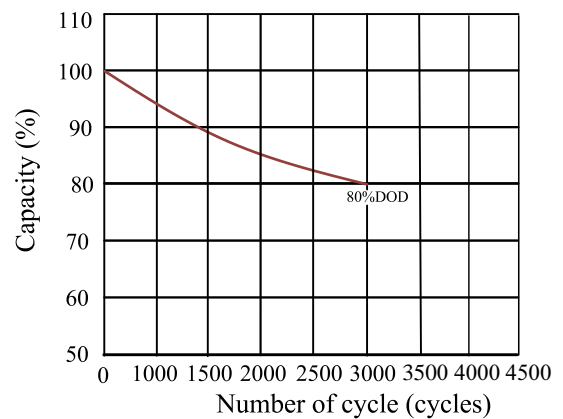
## Charge and Discharge at 25°C, 0.5C



## Temperature effects on capacity at 1C



## Cycle life with DOD at 25°C, 1C/1C



## Cautions

1. Do NOT short circuit, crush or disassemble
2. Do NOT heat or incinerate.
3. Do NOT immerse in any liquid.
4. Store at 50% capacity. Recharge every 6 months. The storage area should be clean, cool, dry and ventilated.
5. Disconnect charging source prior to connecting or disconnecting battery terminals.
6. Do NOT dispose of batteries in a fire as they can explode.
7. Do NOT open, alter, or mutilate batteries. Released electrolyte is harmful to skin and eyes. It may be toxic.
8. Do NOT mix different types and brands of lithium-ion batteries.
9. Do NOT dispose in trash, follow local regulations and manufacturer's instruction.
10. See installation instructions before connecting to the supply.
11. The battery cabinet receives power from more than one source. Disconnection of all DC sources is required to De-energize this unit before installing or servicing. Wait 5 minutes before opening the unit.
12. Do NOT install on or over combustible surfaces
13. Refer to manual before servicing
14. Do NOT touch bare terminals.



Rack PU576V80(S)\*-2\*  
S\*-with HMI , No S without HMI  
2-Two wire system , No 2 Three -wire system