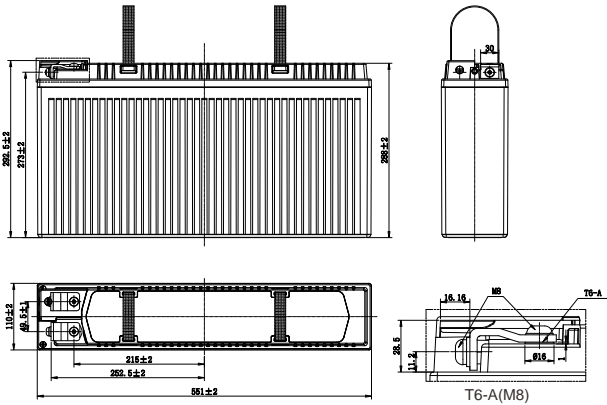
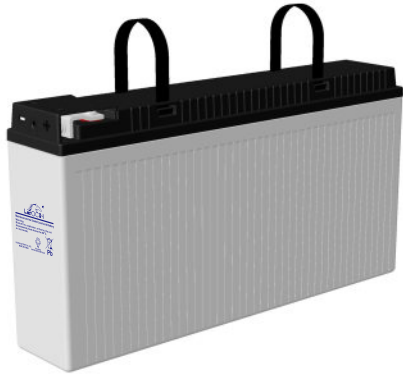


# LHR SERIES-HIGH RATE

## LHR12550FT (12V550W)



### CHARACTERISTICS

Item	Specifications	
Rated Voltage	12V	
Nominal Rate (25°C)	W <sub>15</sub> , 1.67V/cell	550W/cell
Nominal Capacity (25°C)	C <sub>10</sub> , 1.80V/cell	140Ah
Dimension	Length	551mm (21.7inches)
	Width	110mm (4.33inches)
	Container Height	288mm (11.3inches)
	Total Height	292.5mm (11.5inches)
Approx Weight	47.9kg (105.6lbs)	
Terminal	T6-A(M8)	
Container Material	ABS (UL94 HB or V-0 optional)	
Short-circuit current	2800A	
Internal Resistance (25°C)	Approx 3.7 mΩ (Fully charged)	
Operating Temp. Range	Discharge	-20~55°C (-4~131°F)
	Charge	-20~40°C (-4~104°F)
	Storage	-15~50°C (5~122°F)
Nominal Operating Temp. Range	25±3°C (77±5°F)	
Max.Charging Current (25°C)	0.25C	
Charge voltage (25°C)	Float Charge	Equalization Charge
	2.25-2.30V/cell	2.30-2.40V/cell
Temp. Coefficient	-3mV/cell/°C	-4mV/cell/°C
	40°C (104°F)	106%
Effect of temp. to Capacity	25°C (77°F)	100%
	0°C (32°F)	86%
	Self Discharge	≤ 3% per month at 25°C (77°F)

### DISCHARGE TABLE

Constant Current Discharge (Amperes) at 25°C (77°F)														
F.V/Time	5min	10min	15min	20min	30min	45min	1h	1.5h	2h	3h	4h	5h	8h	10h
1.85V/cell	311.4	253.2	217.9	171.3	125.2	98.0	76.7	57.5	46.3	34.5	27.2	23.0	15.9	13.6
1.80V/cell	346.2	281.0	241.3	189.3	138.0	102.2	78.4	61.1	49.0	36.1	28.3	24.0	16.3	14.0
1.75V/cell	373.8	302.9	259.7	203.2	147.5	107.5	81.2	63.5	50.9	37.3	29.2	24.6	16.4	14.1
1.70V/cell	401.9	324.9	277.4	216.7	157.3	111.7	85.2	65.1	52.1	38.1	29.9	25.2	16.7	14.2
1.67V/cell	444.9	358.5	305.4	238.1	172.3	115.1	88.5	66.8	53.3	38.9	30.3	25.5	16.9	14.4
1.60V/cell	460.7	370.7	314.9	244.2	176.5	119.0	90.7	68.0	54.4	39.9	31.0	26.0	17.0	14.5

Constant Power Discharge (Watts/cell) at 25°C (77°F)														
F.V/Time	5min	10min	15min	20min	30min	45min	1h	1.5h	2h	3h	4h	5h	8h	10h
1.85V/cell	581.6	476.4	412.5	325.9	239.3	188.4	148.4	111.5	90.0	67.3	53.4	45.4	31.6	27.1
1.80V/cell	635.9	520.9	451.0	356.3	261.6	195.2	150.8	117.8	94.8	70.1	55.2	47.0	32.2	27.8
1.75V/cell	674.7	552.7	478.5	378.0	277.5	204.1	155.5	121.9	98.1	72.4	56.9	48.2	32.4	27.9
1.70V/cell	713.5	584.4	506.0	399.7	293.5	210.6	162.4	124.3	100.0	73.6	58.0	49.1	32.9	28.1
1.67V/cell	775.5	635.3	550.0	434.5	319.0	215.9	167.7	126.9	102.0	74.9	58.6	49.6	33.2	28.4
1.60V/cell	786.4	644.1	557.7	440.6	323.5	221.0	170.7	128.4	103.3	76.3	59.6	50.4	33.3	28.6

# LHR SERIES-HIGH RATE

## LHR12550FT (12V550W)



### APPLICATIONS

- UPS
- Hospitals and Testing Laboratories
- Emergency Power Supply
- Industrial Process Control Facilities
- Banks and Financial Markets
- Data and Network Operation Centers

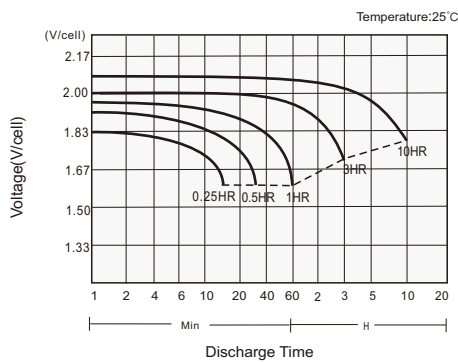
### GENERAL FEATURES

- 12+ years design life (25°C)
- Excellent high current performance - optimised for short discharge time
- Advanced AGM technology for superior high-rate power
- Long Life Alloy - minimizing grid growth, reducing gassing, and extending battery life
- Optimal energy density - saves floor space
- Front access design for easy installation and maintenance

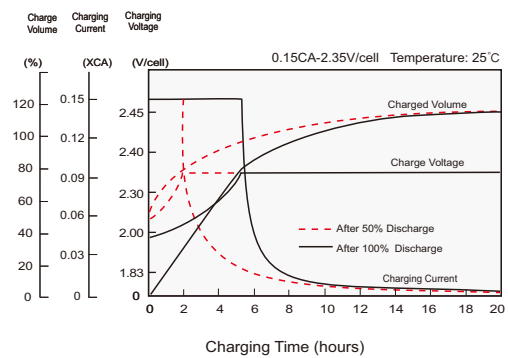
### STANDARDS

- Compliance with IEC 60896 standards
- Classified as "Very Long Life" according to Eurobat
- CE, UL Approved
- Manufactured in Leoch@IATF 16949, ISO 45001, ISO 9001 and ISO 14001 certified production facilities

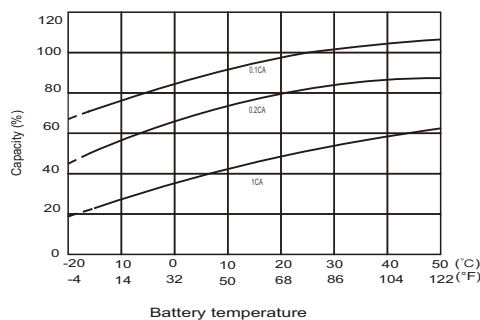
#### Discharge Characteristics



#### Charging Characteristics



#### Effects of Temperature on Capacity



#### Self Discharge Characteristics

