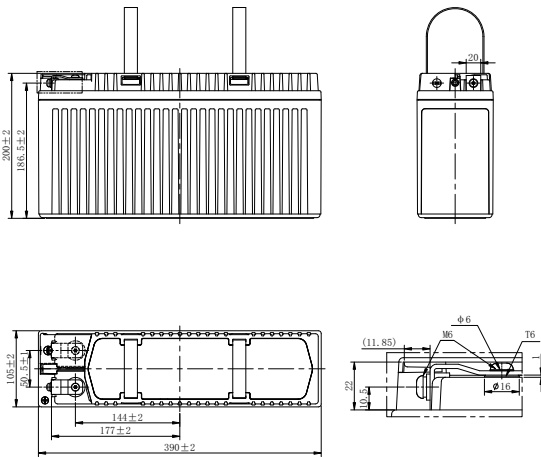
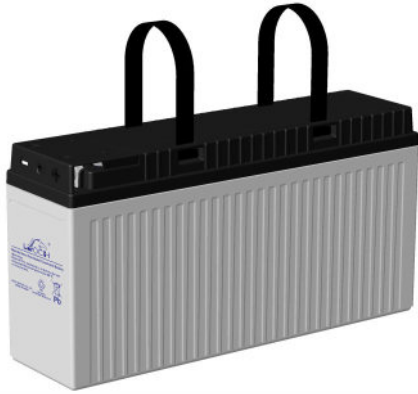


LPF SERIES-FRONT TERMINAL

LPF12-50 (12V50Ah)



CHARACTERISTICS

Item	Specifications	
Rated Voltage	12V	
Nominal Capacity (25°C)	C ₁₀ : 1.80V/cell	50Ah
Dimension	Length	390mm (15.4inches)
	Width	105mm (4.13inches)
	Container Height	200mm (7.87inches)
	Total Height	200mm (7.87inches)
Approx Weight	18.5kg (40.8lbs)	
Terminal	T6(M6)	
Container Material	ABS (UL94 HB or V-0 optional)	
Short-circuit current	1150A	
Internal Resistance (25°C)	Approx 7.6 mΩ (Fully charged)	
Operating Temp. Range	Discharge	-15~50°C (5~122°F)
	Charge	-20~40°C (-4~104°F)
	Storage	-15~40°C (5~104°F)
Nominal Operating Temp. Range	25±3°C (77±5°F)	
Max.Charging Current (25°C)	0.3C	
Charge voltage (25°C)	Float Charge	Equalization Charge
	2.25-2.30V/cell	2.35-2.40V/cell
Temp. Coefficient	-3mV/cell/°C	
	-4mV/cell/°C	
Effect of temp. to Capacity	40°C (104°F)	103%
	25°C (77°F)	100%
	0°C (32°F)	86%
Self Discharge	≤3% per month at 25°C (77°F). LPF series batteries may be stored up to 6 months at 25°C (77°F) and then a freshening charge is required. For higher temperatures the time interval will be shorter.	

DISCHARGE TABLE

Constant Current Discharge (Amperes) at 25°C (77°F)													
F.V/Time	15min	20min	30min	45min	1h	2h	3h	4h	5h	6h	8h	10h	20h
1.85V/cell	64.7	59.9	41.8	35.8	26.3	15.8	11.9	9.50	7.94	7.15	5.60	4.69	2.46
1.80V/cell	75.2	66.4	47.2	38.6	29.2	17.2	12.9	10.2	8.56	7.54	6.00	5.00	2.63
1.75V/cell	79.6	71.7	49.4	39.9	30.2	17.7	13.3	10.5	8.75	7.63	6.11	5.08	2.67
1.70V/cell	84.1	74.5	51.6	40.8	31.3	18.3	13.6	10.8	8.95	7.69	6.22	5.16	2.71
1.67V/cell	87.6	76.8	52.9	41.4	32.0	18.6	13.8	10.9	9.06	7.75	6.28	5.20	2.73
1.60V/cell	93.0	78.5	55.9	41.9	33.6	19.4	14.4	11.3	9.34	7.83	6.43	5.31	2.79
Constant Power Discharge (Watts/cell) at 25°C (77°F)													
F.V/Time	15min	20min	30min	45min	1h	2h	3h	4h	5h	6h	8h	10h	20h
1.85V/cell	132.6	116.2	86.2	70.2	54.6	33.0	25.0	19.9	16.7	14.4	11.8	9.89	5.33
1.80V/cell	152.6	127.8	96.6	75.4	60.1	35.7	26.9	21.4	17.9	15.1	12.6	10.5	5.62
1.75V/cell	159.8	137.4	100.1	77.7	61.8	36.6	27.5	21.9	18.3	15.3	12.8	10.7	5.68
1.70V/cell	167.0	141.5	103.6	78.8	63.7	37.6	28.2	22.3	18.6	15.4	13.0	10.8	5.75
1.67V/cell	172.7	143.9	105.6	79.3	64.7	38.1	28.5	22.6	18.8	15.5	13.1	10.9	5.79
1.60V/cell	180.1	145.1	110.2	79.5	67.2	39.4	29.4	23.2	19.3	15.6	13.4	11.1	5.89

LPF SERIES-FRONT TERMINAL

LPF12-50 (12V50Ah)



APPLICATIONS

- For standard power cabinet
- Network connection equipment of communication system
- Power system of special network of local area network
- Power station systems
- UPS

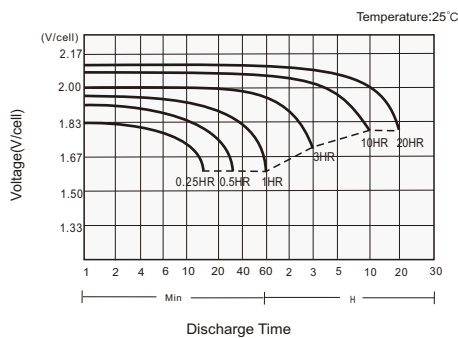
GENERAL FEATURES

- 12+ years design life (25°C)
- Puncture resistant micro-porous glass mat separators extend life
- Flame-arresting, one-way pressure-relief vent for safety and long life
- Front access design for easy installation and maintenance
- Epoxy-sealed posts eliminate leaks

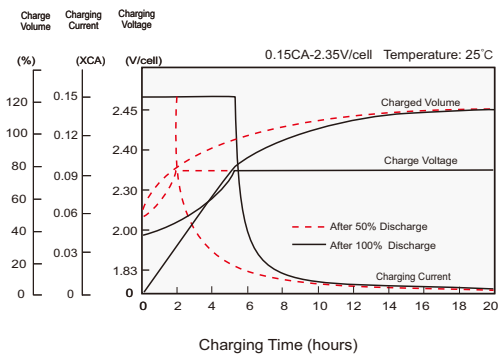
STANDARDS

- Compliance with IEC 60896 standards, EU Battery Directive
- UL, CE Approved
- Manufactured in Leoch@IATF 16949, ISO 45001, ISO 9001 and ISO 14001 certified production facilities

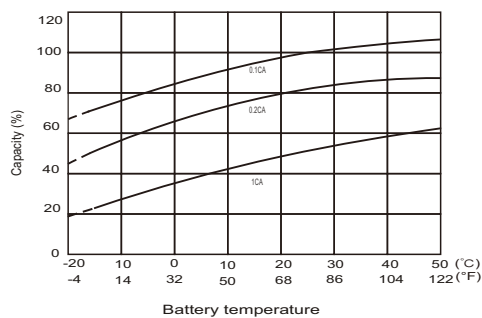
Discharge Characteristics



Charging Characteristics



Effects of Temperature on Capacity



Self Discharge Characteristics

