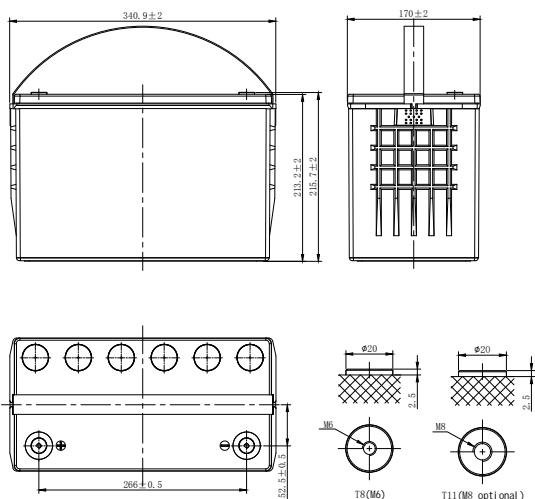


# PLX-PURE LEAD HIGH RATE

## PLX12-420 (12V420W)



### CHARACTERISTICS

Item	Specifications	
Rated Voltage	12V	
Nominal Rate (25°C)	$W_{15}, 1.67V/cell$	420W/cell
Nominal Capacity (25°C)	$C_{10}, 1.80V/cell$	100Ah
Dimension	Length	340.9mm(13.4inches)
	Width	170mm(6.69inches)
	Container Height	213.2mm(8.39inches)
	Total Height	215.7mm(8.49inches)
Approx Weight	33.5kg(73.9lbs)	
Terminal	M6(M8 optional)	
Container Material	PC-ABS (UL94 V-0)	
Short-circuit current	2200A	
Internal Resistance (25°C)	Approx 3.5 mΩ (Fully charged)	
Operating Temp. Range	Discharge	-40~65°C (-40~149°F)
	Charge	-20~54°C (-4~129°F)
	Storage	-20~50°C (-4~122°F)
Nominal Operating Temp. Range	25±3°C (77±5°F)	
Max.Charging Current (25°C)	0.3C	
Charge voltage (25°C)	Float Charge	Equalization Charge
	2.27±0.02V/cell	2.35-2.40V/cell
Temp. Coefficient	-3mV/cell/°C	
	-4mV/cell/°C	
Effect of temp. to Capacity	40°C (104°F)	103%
	25°C (77°F)	100%
	0°C (32°F)	86%
Self Discharge	PLX series batteries can be stored up to 24 months at 25°C(77°F), For higher temperatures the time interval will be shorter.Battery needs to be given a freshening charge when the OCV approach 2.10V/cell or when the maximum storage time is reached, whichever occurs first.	

### DISCHARGE TABLE

Constant Current Discharge (Amperes) at 25°C (77°F)															
F.V/Time	5min	10min	15min	20min	30min	45min	1h	1.5h	2h	3h	4h	5h	8h	10h	20h
1.85V/cell	313.6	243.5	200.1	170.8	130.2	94.8	71.9	51.3	41.0	29.0	22.0	18.8	12.1	9.81	5.05
1.80V/cell	335.9	255.6	208.4	177.0	135.9	98.8	75.1	53.3	42.4	29.9	22.8	19.3	12.4	10.0	5.28
1.75V/cell	373.9	282.9	215.9	185.6	146.6	103.5	78.7	55.3	43.6	30.5	23.2	19.8	12.9	10.4	5.37
1.70V/cell	396.7	312.1	228.2	194.7	151.1	106.7	81.0	56.4	44.3	31.1	23.6	20.0	13.1	10.6	5.42
1.67V/cell	444.6	334.8	236.3	203.4	154.0	108.6	83.1	57.3	44.8	31.7	24.0	20.2	13.3	10.8	5.48
1.60V/cell	473.2	352.8	244.1	212.9	157.9	111.7	84.9	58.6	45.2	32.0	24.3	20.4	13.4	10.9	5.53
Constant Power Discharge (Watts/cell) at 25°C (77°F)															
F.V/Time	5min	10min	15min	20min	30min	45min	1h	1.5h	2h	3h	4h	5h	8h	10h	20h
1.85V/cell	577.4	471.4	382.9	323.2	255.8	191.6	145.8	101.8	79.8	57.3	43.8	35.5	23.1	19.1	10.1
1.80V/cell	642.2	492.3	394.8	334.9	261.0	193.9	146.9	104.0	82.3	58.5	44.7	36.8	23.7	19.3	10.3
1.75V/cell	677.0	540.3	403.9	356.2	273.8	200.5	151.9	107.8	85.8	60.0	45.7	37.9	24.3	19.6	10.5
1.70V/cell	744.4	570.9	414.6	365.8	277.6	204.1	154.2	108.9	86.5	60.7	46.3	38.3	24.7	20.0	10.6
1.67V/cell	795.6	600.0	420.0	374.0	283.4	207.9	156.7	110.1	87.6	61.5	46.8	38.8	25.1	20.3	10.7
1.60V/cell	848.2	619.1	434.5	381.8	288.1	211.1	158.5	111.7	88.3	62.2	47.3	39.3	25.3	20.7	10.8

# PLX-PURE LEAD HIGH RATE

## PLX12-420 (12V420W)



### APPLICATIONS

- UPS
- Emergency lighting
- Emergency Power supply
- Electric starting
- Power tools

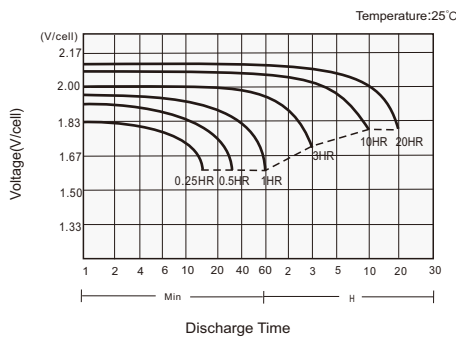
### GENERAL FEATURES

- 15 years design life (25°C)
- Utilizes pure lead technology, thin positive grids and unique manufacturing process to maximize corrosion resistance and service life while increasing energy density
- Specifically designed for high-rate discharge applications
- Wide Wpc range of front and top terminal monoblocs
- UL 94 V-0 Case and cover heat sealed and 100% tested to prevent leaks

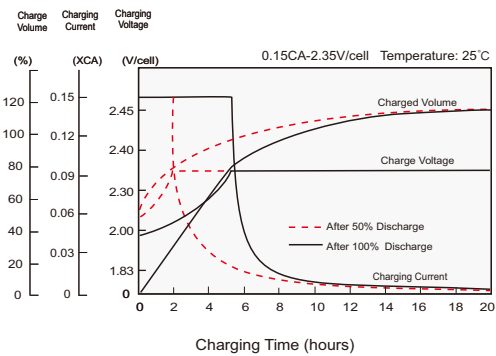
### STANDARDS

- Compliance with IEC 60896 standards
- Classified as "Very Long Life" according to Eurobat
- CE,UL Approved
- Manufactured in Leoch@IATF 16949, ISO 45001,ISO 9001 and ISO 14001 certified production facilities

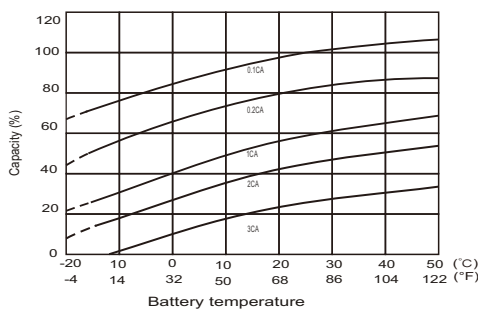
#### Discharge Characteristics



#### Charging Characteristics



#### Effects of Temperature on Capacity



#### Self Discharge Characteristics

