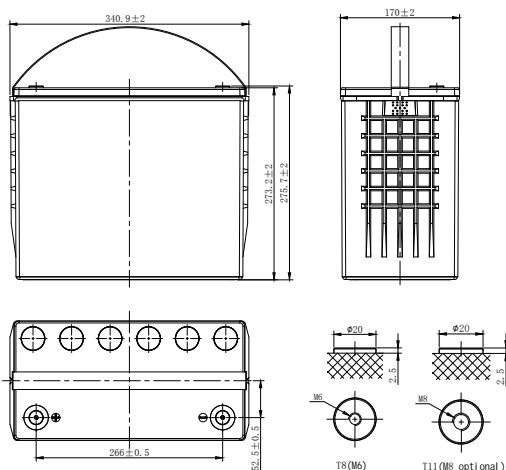


PLX-PURE LEAD HIGH RATE

PLX12-500 (12V500W)



CHARACTERISTICS

Item	Specifications	
Rated Voltage	12V	
Nominal Rate (25°C)	$W_{15}, 1.67V/cell$	500W/cell
Nominal Capacity (25°C)	$C_{10}, 1.80V/cell$	125Ah
Dimension	Length	340.9mm(13.4inches)
	Width	170mm(6.69inches)
	Container Height	273.2mm(10.8inches)
	Total Height	275.7mm(10.9inches)
Approx Weight	41.7kg(91.9lbs)	
Terminal	M6(M8 optional)	
Container Material	PC-ABS (UL94 V-0)	
Short-circuit current	2750A	
Internal Resistance (25°C)	Approx 3.6 mΩ (Fully charged)	
Operating Temp. Range	Discharge	-40~65°C (-40~149°F)
	Charge	-20~54°C (-4~129°F)
	Storage	-20~50°C (-4~122°F)
Nominal Operating Temp. Range	25±3°C (77±5°F)	
Max.Charging Current (25°C)	0.3C	
Charge voltage (25°C)	Float Charge	Equalization Charge
	2.27±0.02V/cell	2.35-2.40V/cell
Temp. Coefficient	-3mV/cell/°C	-4mV/cell/°C
	40°C (104°F)	103%
Effect of temp. to Capacity	25°C (77°F)	100%
	0°C (32°F)	86%
	Self Discharge	PLX series batteries can be stored up to 24 months at 25°C(77°F), For higher temperatures the time interval will be shorter.Battery needs to be given a freshening charge when the OCV approach 2.10V/cell or when the maximum storage time is reached, whichever occurs first.

DISCHARGE TABLE

Constant Current Discharge (Amperes) at 25°C (77°F)															
F.V/Time	5min	10min	15min	20min	30min	45min	1h	1.5h	2h	3h	4h	5h	8h	10h	20h
1.85V/cell	321.3	250.1	208.7	175.6	141.3	104.7	85.4	60.2	47.7	35.4	27.4	23.2	15.4	12.3	6.38
1.80V/cell	362.1	287.9	219.7	191.2	150.5	109.9	88.8	62.7	50.0	37.0	28.5	23.8	15.5	12.5	6.51
1.75V/cell	395.9	315.9	237.2	204.4	160.6	113.3	91.2	64.3	51.3	37.8	29.3	24.3	15.8	12.7	6.60
1.70V/cell	426.7	341.8	252.6	214.5	166.6	117.3	94.9	65.9	52.0	38.6	29.7	24.8	16.1	12.9	6.65
1.67V/cell	476.0	358.9	267.1	223.2	173.1	121.8	96.7	67.7	52.9	39.1	30.2	25.3	16.4	13.2	6.69
1.60V/cell	513.8	365.5	275.6	229.4	177.0	123.5	98.6	68.4	53.8	39.7	30.4	25.5	16.8	13.4	6.73
Constant Power Discharge (Watts/cell) at 25°C (77°F)															
F.V/Time	5min	10min	15min	20min	30min	45min	1h	1.5h	2h	3h	4h	5h	8h	10h	20h
1.85V/cell	640.1	488.6	409.4	346.0	280.2	209.0	171.1	120.7	95.6	71.4	55.5	47.5	32.5	26.2	13.2
1.80V/cell	713.9	557.5	426.6	374.5	297.6	217.9	176.8	124.8	99.5	74.0	57.5	49.2	33.5	26.8	13.4
1.75V/cell	767.8	606.4	458.9	396.2	313.1	222.2	180.0	126.6	101.7	75.5	58.7	50.2	33.8	27.1	13.5
1.70V/cell	809.8	647.1	482.1	411.8	321.7	227.8	186.0	128.0	102.6	76.7	59.2	50.6	34.0	27.2	13.6
1.67V/cell	870.5	678.1	500.0	425.9	333.4	235.2	188.7	131.8	103.9	77.1	59.6	50.6	34.2	27.3	13.7
1.60V/cell	888.8	681.9	516.9	434.4	336.2	236.9	190.2	132.3	104.3	77.2	59.7	50.7	34.3	27.4	13.8

PLX-PURE LEAD HIGH RATE

PLX12-500 (12V500W)



APPLICATIONS

- UPS
- Emergency lighting
- Emergency Power supply
- Electric starting
- Power tools

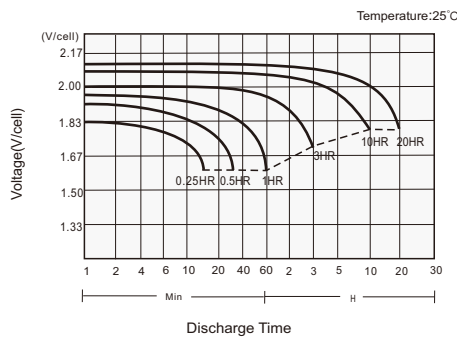
GENERAL FEATURES

- 15 years design life (25°C)
- Utilizes pure lead technology, thin positive grids and unique manufacturing process to maximize corrosion resistance and service life while increasing energy density
- Specifically designed for high-rate discharge applications
- Wide Wpc range of front and top terminal monoblocs
- UL 94 V-0 Case and cover heat sealed and 100% tested to prevent leaks

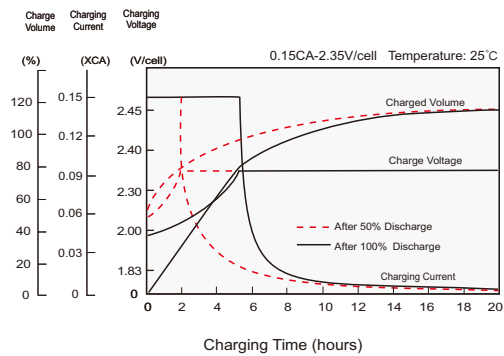
STANDARDS

- Compliance with IEC 60896 standards
- Classified as "Very Long Life" according to Eurobat
- CE,UL Approved
- Manufactured in Leoch@IATF 16949, ISO 45001,ISO 9001 and ISO 14001 certified production facilities

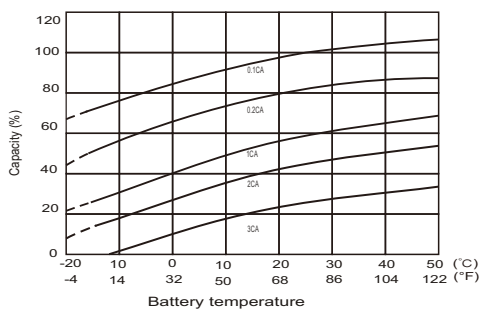
Discharge Characteristics



Charging Characteristics



Effects of Temperature on Capacity



Self Discharge Characteristics

